

# NSW Camellia Research Society NEWSLETTER

ISSN: 2207-6883

## INSIDE THE MARCH 2022 ISSUE

PG. 2  
President's Report  
M is for Marchand . . .

PG. 3  
Memberships for 2022

PG. 6  
Monthly Meeting Schedule 2022

PG. 7  
Committee Contact Details

PG. 8  
Bloom Competition and Rules 2022

PG. 10  
Camellias S. A. to be Wound Up  
Growing Camellias in Unfavourable  
Conditions

PG. 11  
Merit Certificates 2021



At long last the Sasanquas have started  
Camellia sasanqua 'Setsugeka', first for this year  
and inset, last of last year

The first  
meeting for  
2022 is coming  
up on the 21<sup>st</sup> .  
Hope to see  
many members  
there.

## MARCH REPORT

March is here and we're still waiting for our usual mass of sasanquas. The unbelievable rain seems to have put the Camellias in a "holding pattern". It was a shame to read that Camellias SA has wound up (see letter later in this newsletter).

A special call out to Members: If you have any notes, photos or stories relating to Camellias that may interest other members, please forward them to the Editor's email: [nswcamellias@hotmail.com](mailto:nswcamellias@hotmail.com)



## PRESIDENT'S REPORT, MARCH 2022

Will the rain ever stop?

I am reliably informed that Camellias need good drainage and good irrigation during drought periods. But what to do during a prolonged La Nina East Coast Low? Good drainage will help, hopefully, before fungal diseases take hold.

And what is the portent for our monthly Bloom Competitions? We are less than 2 weeks away from our first meeting of the year on Monday 21<sup>st</sup> March. Usual time (benching blooms from 7pm, meeting from 7:30pm) at our usual place (Gordon Baptist Church, 20-22 Park Avenue, Gordon). We are hoping for good attendance figures from our members and their guests. We are working on a securing a speaker and will let you know by email, if not confirmed before this Newsletter is sent out.



Also "Save the Date" please for Tuesday 26<sup>th</sup> April as an alternative to our traditional 3<sup>rd</sup> Monday of the month which this year will be Easter Monday. The Committee felt that it would be preferable to delay the meeting by a week, but also to avoid Monday 25<sup>th</sup> April due to potential clashes with ANZAC day commitments. This will be confirmed after discussions with the Church.

If you have not yet renewed your membership, please do so. Personalised reminders are being sent by email.

Looking forward to seeing you all on 21<sup>st</sup> March,

Bruce Walker

President NSW CRS

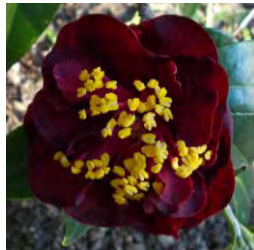


IS FOR MARCH AND . . .

PHOTOS: MEMBERS NSW CRS



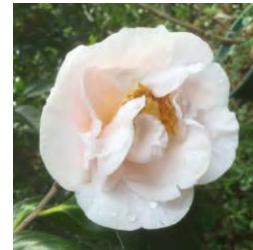
Mark Alan Variegated



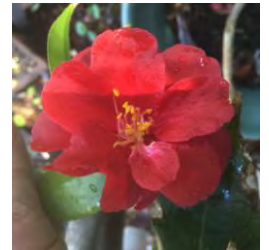
Maroon and Gold



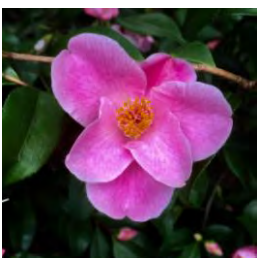
Matilija Poppy



Mrs D W Davis



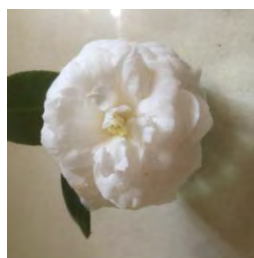
Moshio



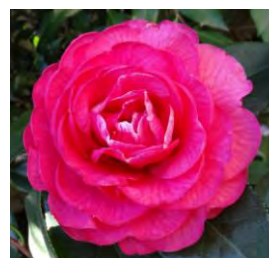
Minato No Akebono



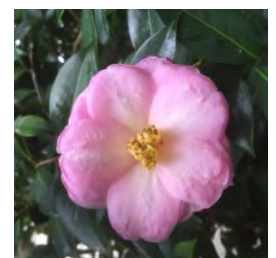
Mine No Yuki



Mrs Bell



Mandalay Queen



Margaret Waterhouse



## MEMBERSHIP SUBSCRIPTIONS ARE NOW OVERDUE

**NSW CAMELLIA RESEARCH SOCIETY**  
A.B.N. 16 873 158 367 Incorporation. No. Y17693-47  
An affiliate of Camellias Australia

### MEMBERSHIP RENEWAL FORM

**Why renew your membership with the NSW Camellia Research Society?**

Membership has many advantages, including:

- Newsletters - enjoy the informative monthly newsletter as well as the Camellia News (from Camellias Australia) on a quarterly basis
- Meetings - join us between February and October for guest speakers, bloom competition, trading table, library access, donation prizes and practical advice on camellia culture
- Social Events - open days, dinners and other special events
- Industry contacts - access to experts, nurseries, new and rare camellia varieties
- Bloom Competition - beautiful displays, monthly point score and annual prizes and awards
- Garden Visits - access to private gardens with amazing camellia collections
- Committee participation - get active behind the scenes and help steer the Society

**Membership Fees for the period 1 Nov 2021 to Oct 2022 are detailed over the page.**

Please renew your membership now by completing the form and following the payment instructions over the page.

---

**NSW CAMELLIA RESEARCH SOCIETY**  
A.B.N. 16 873 158 367 Inc. No. Y17693-47

I / We would like to renew my/our membership of the NSWCRS and in doing so agree to abide by the Rules of the Society:

Name/s:			
Address:			
Suburb:			
State:		Postcode:	
Phone:		Mobile:	
Email:			
Membership:	<input type="checkbox"/>	I / We have selected a Membership Option from those listed over the page	
Payment:	<input type="checkbox"/>	Bank transfer Reference used: _____; Receipt # _____	
	<input type="checkbox"/>	Cheque enclosed for \$ _____	
In renewing my / our membership, I / we understand that my / our contact information may be viewed and used by members of the Society*.			
Signature/s:			

\*NB. NSWCRS respects your privacy and will only use or release your contact information for matters associated with fulfilling the Objects of the Society.



**NSW CAMELLIA RESEARCH SOCIETY**

A.B.N. 16 873 158 367 Incorporation. No. Y17693-47

An affiliate of Camellias Australia

Membership Type	Total Fees Due
Single—Emailed newsletter ONLY	\$30
Single—Emailed AND Printed & posted black and white newsletter	\$60
Household—Emailed newsletter ONLY	\$40
Household—Emailed AND Printed & posted black and white newsletter	\$70
Life Members—Emailed newsletter ONLY	No Fee
Life Members—Emailed AND Printed & posted black and white newsletter	\$30

Please note: Emailed newsletters are included as part of all memberships, however, if you require a printed (black and white) and posted newsletter, an additional fee of \$30 per membership is required to cover the annual cost of commercial printing.

For all Membership Enquiries contact:  
Membership Secretary

Daniel Low  
2 Narelle Avenue  
Pymble NSW 2073  
Tel: 99883280  
E: [nswcamellias@hotmail.com](mailto:nswcamellias@hotmail.com)

**Payment Options:**

- Online bank transfer:  
Account: NSWCRS  
BSB: 062247  
Account #: 00900966  
Reference: your surname & "SUBS"
- Cheque:  
made payable to  
'NSW Camellia Research Society Inc.'

**NSW CAMELLIA RESEARCH SOCIETY**

A.B.N. 16 873 158 367

Inc. No. Y17693-47

Please select your preferred Membership Type:

Membership Type	Total Fees Due	Please select one type only
Single—Emailed newsletter ONLY	\$30	<input type="checkbox"/>
Single—Emailed AND Printed & posted black and white newsletter	\$60	<input type="checkbox"/>
Household—Emailed newsletter ONLY	\$40	<input type="checkbox"/>
Household—Emailed AND Printed & posted black and white newsletter	\$70	<input type="checkbox"/>
Life Members—Emailed newsletter ONLY	No Fee	<input type="checkbox"/>
Life Members—Emailed AND Printed & posted black and white newsletter	\$30	<input type="checkbox"/>

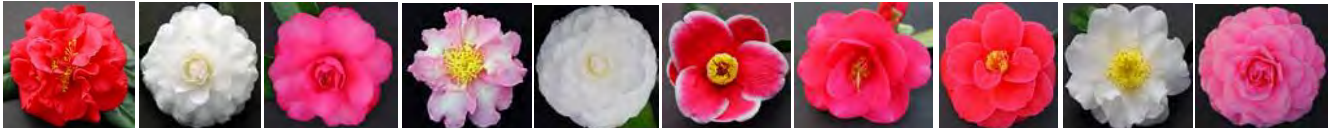
Reminder: Emailed newsletters are included as part of all memberships, however, if you require a printed (black and white) and posted newsletter, an additional fee of \$30 per membership is required to cover the annual cost of commercial printing.

All members are kindly requested to complete this form and email or post it to the Secretary (details above) to ensure that our membership details are kept up-to-date and accurate.



# Camellia Grove Nursery

ESTABLISHED 1939



OUR NURSERY: 8 Cattai Ridge Road, Glenorie NSW 2157

Phone: (02) 9652 1200

Fax: (02) 9652 2740

NURSERY TRADING HOURS

OPEN 7 DAYS 9am-4pm

Browse our website at: <http://www.camelliagrove.com.au>



Neutrog Products Are:



Locals like this Spotted Gum couldn't stand up in the rain and it took out large branches of the adjacent Sydney Red Gum also knocking down a young Yellow Stringybark



## MONTHLY MEETING SCHEDULE 2022 (CHANGES TO BE NOTIFIED)

<b>March 2022</b>	
<b>Monday, 21st</b>	NSWCRS Monthly Meeting (Always 3rd Monday of Month) <i>Gordon Baptist Church, 20-22 Park Ave, Gordon 7pm</i> <i>benching of blooms for 7.30pm meeting</i> Speaker : Richie Griffiths
<b>April 2022</b>	
<b>Tuesday 19th</b>	NSWCRS Monthly Meeting <i>Gordon Baptist Church, 20-22 Park Ave, Gordon 7pm</i> <i>benching of blooms for 7.30pm meeting</i> Speaker TBA
<b>May 2022</b>	
<b>Monday 16th</b>	NSWCRS Monthly Meeting (Always 3rd Monday of Month) <i>Gordon Baptist Church, 20-22 Park Ave, Gordon 7pm</i> <i>benching of blooms for 7.30 meeting.</i> Speaker TBA
<b>June 2022</b>	
<b>Monday 20st</b>	NSWCRS Monthly Meeting (Always 3rd Monday of Month) <i>Gordon Baptist Church, 20-22 Park Ave, Gordon 7pm</i> <i>benching of blooms for 7.30 meeting.</i> Speaker TBA
<b>July 2022</b>	
<b>Saturday 9th and Sunday 10th</b>	NSW CRS Annual Show. Details to follow
<b>Saturday 16th and Sunday 17th</b>	Illawarra Annual Show
<b>Monday 25th</b>	NSWCRS Monthly Meeting (Deferred for Show Month) <i>Gordon Baptist Church, 20-22 Park Ave, Gordon 7pm</i> <i>benching of blooms for 7.30 meeting.</i> Speaker TBA
<b>August 2022</b>	
<b>Monday 15th</b>	NSWCRS Monthly Meeting (Always 3rd Monday of Month) <i>Gordon Baptist Church, 20-22 Park Ave,</i> <i>Gordon 7pm benching of blooms.</i> Speaker TBA
<b>September 2022</b>	
<b>Monday 19th</b>	NSWCRS Monthly Meeting (Always 3rd Monday of Month) <i>Gordon Baptist Church, 20-22 Park Ave, Gordon 7pm</i> <i>benching of blooms for 7.30 meeting.</i> Speaker TBA
<b>October 2022</b>	
<b>Monday 17th</b>	NSWCRS AGM 7.30pm. <i>Gordon Baptist Church, 20-22 Park Ave, Gordon.</i>
<b>November 2022</b>	
	Annual Dinner and Presentations. Date and Location TBA



## NSWCRS COMMITTEE CONTACT DETAILS 2020-2021

Patron:	Her Excellency Professor The Honourable Dame Marie Bashir AD CVO	
President:	Bruce Walker	T: 0412 588 719 E: bfwalks2@tpg.com.au
Vice President:		
Secretary:	Helen Wallace	M:0404 721 572 E:helen_wallace@optusnet.com.au
Treasurer:	Julie Hood	T: 94118569 E: jhoodmazlin@gmail.com
Public Officer:	Richie Griffiths 39 Hazelmead Rd, Asquith NSW 2077	M: 0418 200 139 E:rgriffiths@ryde.nsw.gov.au
Newsletter Editor and Membership Secretary	Daniel Low	T: 99883280 E: nswcamellias@hotmail.com
Librarian:	Bill Fleming	E:wfleming@primusononline.com.au
Committee:	Bruce Walker (President)	Helen Wallace (Secretary)
	Julie Hood (Treasurer)	Juliet Muras
	Daniel Low (Newsletter Editor and Membership Secretary)	Margaret Levick (Fellow NSW CRS)
	Richie Griffiths ( <i>Public Officer</i> )	Judith McGill
National Councillors:	Yet to be nominated	
ABN:	16 873 158 367	
Incorporation No.:	Y17693-47	

**BLOOM COMPETITION AND RULES 2022**

Class	Description	Mar	Apr	May	Jun	Jul	Aug	Sep
1	Sasanqua Single	✓	✓					
2	Sasanqua Formal Double & Elegans Form	✓	✓					
3	Sasanqua other forms	✓	✓					
4	Sasanqua any form			✓	✓			
5	Japonica/Hybrid Single		✓	✓	✓	✓	✓	✓
6	Japonica/Hybrid Semi-double		✓	✓	✓	✓	✓	✓
6A	Japonica / Hybrid Irregular Semi-Double		✓	✓	✓	✓	✓	✓
7	Japonica/Hybrid Elegans Form		✓	✓	✓	✓	✓	✓
8	Japonica/Hybrid Informal Double		✓	✓	✓	✓	✓	✓
9	Japonica/Hybrid Formal Double		✓	✓	✓	✓	✓	✓
10	Japonica/Hybrid Miniature		✓	✓	✓	✓	✓	✓
11	Japonica/Hybrid any form	✓						
12	Reticulatas & their hybrids		✓	✓	✓			
13	Reticulatas & their hybrids up to 130mm					✓	✓	✓
14	Reticulatas & their hybrids over 130mm					✓	✓	✓
15	Other not listed	✓	✓	✓	✓	✓	✓	✓
16	Clusters & sprays of multi-flowered species & hybrids	✓	✓	✓	✓	✓	✓	✓
17	New seedling or sport (1 to 3 blooms)	✓	✓	✓	✓	✓	✓	✓
C1	Collection: Sasanqua, any form, 3 blooms	✓	✓					
C2	Collection: Any camellia, any form, 3 blooms		✓	✓	✓	✓	✓	✓

**Classes**

Classes 1 to 15: one bloom, with a maximum of 2 attached leaves

Classes C1 & C2: a collection of 3 blooms, with a maximum of 2 attached leaves

**Competition**

A 'Novice' exhibitor has not won the annual 'Novice' championship, nor have they scored 20 points in a monthly 'Open' competition. The competition year starts in March, and a 'Novice' in March remains so to the end of that year. A bloom exhibited by a 'Novice' can win in 'Open' classes.

**Points**

'Open' and 'Novice' Classes 1 to 16: 1<sup>st</sup> = 3 points; 2<sup>nd</sup> = 2 points; 3<sup>rd</sup> = 1 point (if required)

'Open' and 'Novice' Collections Classes C1 to C2: 1<sup>st</sup> = 6 points; 2<sup>nd</sup> = 4 points; 3<sup>rd</sup> = 1 point (if required)

'Open' and 'Novice' Champion bloom (from the winning blooms) Extra 3 points.





## COMING INTO AUTUMN AND YOUR ORCHIDS NEED A FEED

# Strike Back for Orchids ... and all other potted flowering and fruiting plants!



Now  
available  
in the **NEW**  
Advanced  
Biological  
Formula

"We conducted a trial of Strike Back for Orchids Advanced Biological Formula alongside the original Strike Back for Orchids on the underperforming bromeliads and orchids at the Adelaide Botanic Garden. We saw an improvement from both products, but the Advanced Biological Formula clearly supported a more significant improvement with lots of healthy new growth."

**Andy Hart**  
*Senior Horticultural Curator  
at the Botanic Gardens  
and State Herbarium*

**NEUTROG**  
Biological Fertilisers

Freecall 1800 65 66 44 | [www.neutrog.com.au](http://www.neutrog.com.au)



## CAMELLIAS SOUTH AUSTRALIA TO BE WOUND UP

I daresay you have caught up with the news on Facebook that Camellias SA Inc has decided to wind-up. It's a sad time for our club but, what with low attendance at meetings and very few able bodied people to help out at Carrick Hill where we held our Annual Camellia Show, and COVID, the time has come for this decision to be made. We held a Special General Meeting on 16 February 2022 with a unanimous vote to wind up.

We will miss being a part of Camellias Australia Inc.

Wishing you all the best in the future.

Kind regards

*Bob Hooper*

Ex Hon Secretary



## GROWING CAMELLIAS IN UNFAVOURABLE CONDITIONS

D. LOW

"I Love a Sunburnt Country . . ." The second stanza of "My Country" says it all and it might just as readily refer to how and where we try to grow Camellias in Australia.

As found on nearly every Camellia label they prefer "a well-drained slightly acidic soil" so recent and current conditions here on the east coast negates the well-drained idea as soils are beyond saturation point and where possible the rain is now just running off the surface of the soil. As an example, our lawns are like sodden sponges, with water squelching underfoot. The La Niña we are currently experiencing is forecast to continue to May.

One of the worst problems a Camellia can suffer is **Root Rot**. Root rot always does best in waterlogged soils. The evidence of the problem does not show itself until the weather becomes fine and then we see the leaf dieback. The plant may be saved if you see that the soil is not drying out and the plant is small enough, lifting it and planting back in a suitable pot may enable recovery. Our east coast low has dumped as much water as might arrive in a cyclone/hurricane.

From Jim Powell, a fellow Horticulturist I took an extract from his article on Fire Hardiness.

"A give-away to these cold-loving species japonica is their waxy epidermal cortex covering the leaves. Wax as you know is a good protector from the cold and moisture, one of the reasons we use wax coated boxes for plants, so the boxes don't become soggy from the water in the pots. But wax is not a good protector against strong heat as wax becomes hot, it melts and burns.

So what chance of survival with all this information, would you expect to happen to cold loving Camellias in the event



of a fire-storm many times hotter—closer to 1000 degrees Celsius.

I can say through personal experience, quite the opposite happened. On Christmas Day 2001, my garden of 1000 different cultivars was ravaged by a bushfire so large and intense, on a 20 kilometer front, that left nothing in its path, but many black stumps and white ash.

In conclusion, I always regarded Camellias as a hardy type of plant that grown in the right conditions, had little problems with pests and diseases and I was well aware of their hardiness to cold, snow and frost once established. I was however completely taken by surprise as to their toughness against extreme heat



because any problems I had with Camellias in the past were due to stress from high temperatures and dryness, particularly to those Williamsii hybrids such as, “Waterlily” and “E.G. Waterhouse”. But surprisingly both of these regenerated from the fire.

So with this factor in mind, the difference between rebirthing of Camellias after devastation from fires etc., must come from a different process line to the slow death from die-back in hot dry weather. It is obvious from this experience that Camellias are extremely hardy plants in many different conditions, and can hold their place with Natives through bushfires with one added advantage because of their thick moist leaves they act as a good fire protection barrier and I have no doubt, had it not been for the number of large Camellias between my home and the fire front, the house too could have been badly damaged, or completely lost. I am slowly replacing as many of the Camellias as possible, in gratitude for what they have done in helping to save my property, and because I know now they are as tough as any other plant that likes acid soils.”

Some years ago the late Dr Clifford Parks wrote an article comparing growing Camellias in south-eastern United States with South East Asia (A.C.S. Yearbook 1985). Although the climatic conditions including latitude may be similar, there is a greater dependence on deciduous trees in the USA. In Japan it is only above 500m in elevation that deciduous trees become dominant. The purpose of the study was to collect samples of cold-tolerant, “inherited hardiness” Camellias from these forests to take back to the USA in order to develop a population of such trees for colder climate positions there.

The last factor of importance to us here in Australia is drought tolerance. Many times, we in the Camellia World have heard of plants that are in “Unfavourable Positions” and localities where low rainfall is normal, having survived very dry spell; sometimes of years rather than months. Members and relatives in much dryer (average annual rainfall) than we get on the coast relate how their camellias have developed over time, after careful watering when juvenile, into large trees that are very drought hardy. We came to our place thirty years ago and some of the large Camellias are now 80 years old. We have had severe water restrictions a number of times, however, the deep root system has still found water when the surface soil has been dry to well below shovel blade depth.



In 2021 The Society presented Certificates of Merit for winners of all the Annual Prizes



*NSW Camellia Research Society  
Annual Bloom Competition 2021*

*Certificate of Merit*

*Pre-Covid Lockdown Entries*

*Helen Simon Miniatures  
and Sprays Competition  
Equal First Place*

*Juliet Muras*

*President: Bruce Walker*

*NSW Camellia Research Society  
Annual Bloom Competition 2021*

*Certificate of Merit*

*Pre-Covid Lockdown Entries*

*Helen Simon Miniatures  
and Sprays Competition  
Equal First Place*

*Carolyn and Daniel Low*

*President: Bruce Walker*

*NSW Camellia Research Society  
Annual Bloom Competition 2021*

*Certificate of Merit*

*Pre-Covid Lockdown Entries*

*Len Bray Reticulata Competition  
First Place*

*Richie Griffiths*

*President: Bruce Walker*

*NSW Camellia Research Society  
Annual Bloom Competition 2021*

*Certificate of Merit*

*Pre-Covid Lockdown Entries*

*Lucy Payens Trophy for Sasanguas  
First Place*

*Bruce Walker*

*President: Bruce Walker*

*NSW Camellia Research Society  
Annual Bloom Competition 2021*

*Certificate of Merit*

*Pre-Covid Lockdown Entries*

*Novice Competition Point Score  
First Place*

*Wendy Sadler-Moyes*

*President: Bruce Walker*