

NSW Camellia Research Society NEWSLETTER

ISSN: 2207-6883

INSIDE THE JULY 2022 ISSUE

 PG. 2

President's Report June
J is for July and . . .

 PG. 3

Show Flyer

 PG. 4

Special Excursion to "Mirrabooka"

 PG. 5

June Bloom Competition Results

 PG. 7

Monthly Meeting Schedule

 PG. 8

NSW CRS Committee Details

 PG. 9

What's On At Eryldene
Lisgar Gardens Gala Day



Petite by Nature but not by Name
'Man Size'-Elegance Personified



JULY REPORT

July is Showtime

Show Setup:
7/7, 9.00am

Entries:

9/7, 7.00am

Show Opens:

9/7, 1.30pm

After Show Cleanup:

10/7, 4.00pm+

It's Showtime and if you have any questions as to how you can assist in making it a resounding success just get in touch with Show Manager, Richie on 0418 200 139 and see what you can do.

There will be plenty to do on Thursday and again on Sunday afternoon



PRESIDENT'S REPORT, MAY 2022

What?!! More rain!

In the middle of our Blooming Season!

What are the weather planners thinking? Will this rain ruin our blooms or make the plants waiting to bloom more prolific?

A big thank you to Stephen Utick for his presentation to our June Meeting. Lots of interesting photos and anecdotes about the work of Camellia Ark. There are still vacancies for Camellia Ark Australia (CAA) Two Day Discovery Garden Tour of the Shoalhaven and Southern Highlands NSW, to be held Wednesday 10 to Thursday 11 August 2022.



Our big event of the year is almost upon us: Our **Annual Show** which is being held at Ravenswood School on **9th and 10th July**. That is this coming weekend!

We have a number of members who volunteered at the June Meeting to help with the many tasks/roles, but not enough to make the running of the show enjoyable for all.

We need more help, please, from our Members:

On Thursday 7th from 9am for the setting up of the show tables.

On Saturday 9th; benching of blooms is from 7am to 11am, so bring your blooms and help to make the Show a stunner. Help is then needed from about 12:30pm to help get ready for the paying public from 1:30pm until closing at 4:30pm.

On Sunday 10th; help is needed all day from 10am to 4pm, and then the packing up after 4pm.

So please, just come along when you can, and help where you can. I am sure that our Show Manager, Richie Griffiths, will be very pleased to see you and to find where your help is needed most. Even a couple of hours would help.

The following weekend, 16th and 17th July is the Illawarra Show and I am sure your blooms and presence would be appreciated by them.

We will be having our regular monthly meeting and Bloom competition on Monday 18th July at Gordon Baptist Church. Hopefully your blooms will have recovered from the rain by then and will be in top form. For the main part of the Meeting, we are having a grafting demonstration and discussion. This may be followed by a presentation on Shrink-Swell clay soils, if there is time.

Our special Castle Hill excursion is discussed later in the Newsletter.

Looking forward to seeing you all at our Show,

Cheers

Bruce Walker



IS FOR JULY and . . .

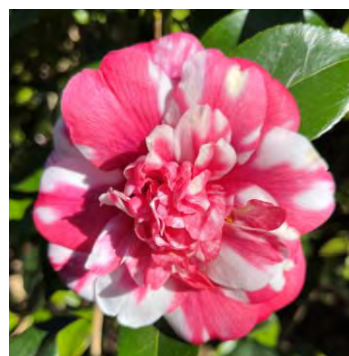
PHOTOS: D. and C. LOW



Jitsugetssei



C. M. Wilson



Governor Mouton



Holly Bright



NSW CRS SHOW 2022 IS COMING SCHEDULE IN SEPARATE EMAIL



NSW Camellia Research Society Inc Presents its

51st Annual *Camellia Show*

At Ravenswood School for Girls,
Henry Street, Gordon

Saturday 9TH July 2022

1.30pm to 4.30pm

and

Sunday 10TH July 2022

10am to 4pm

Featuring:

Spectacular Display of Beautiful Camellias

"Camellia Grove" Camellias for Sale and Camellia Plant Raffle Daily

Beautiful Displays of Sogetsu Ikebana; Camellia Artifacts

"Cut Above" Garden Tools for Sale

Bring Your Camellias For Identification or Help with Pests and Diseases

Admission: Adults - \$5 (includes a Lucky Door Prize) School children - Free

Ravenswood School for Girls and the Camellia Show are both COVID Safe and request all visitors to adhere to recommended NSW Health COVID Safe guidelines;

- If you are unwell, even with very mild symptoms, please stay at home and seek appropriate medical care.
- If anyone in your household or a close contact tests positive for COVID-19 do not attend.
- If anyone in your household or a close contact is being tested for COVID-19, please do not attend until a negative result has been returned.
- You are encouraged to wash your hands regularly and use the hand sanitiser provided.

Enquiries: nswcamellias@hotmail.com



SPECIAL EXCURSION: "MIRRABOOKA" CASTLE HILL

The current owner, Robert Bishop, has kindly given us permission to visit the gardens of "Mirrabooka", at 372 Old Northern Road, Castle Hill. The house, a modernist design by architect Bruce Rickard, and gardens are listed on the Heritage Register.

The visit will be on Monday 25th July 2022. We will be meeting at 10:30am for a self-guided tour of the gardens. There a number of Camellias, in resplendent bloom, as well as an arboretum which has been established since construction of the house was completed in 1963. Parking in the property is limited to about 6 cars, if we park in tight: first come, first parked. There is limited parking on Old Northern Road opposite the property. There would be much merit in car pooling to ease the parking issues, so arrange your travel with other members where possible.

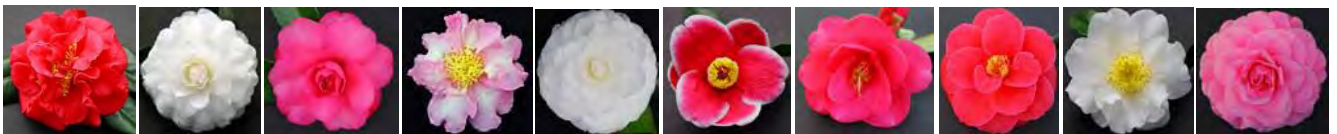
Bring a thermos for morning tea picnic. Wear outdoor footwear as the grass may be wet and you will be walking through garden areas that are not on formal paths. The garden area is steep in parts, and would only be suitable for limited mobility in the vicinity of the house.

It should be a most interesting garden excursion.

Ed. Note: When its over, why not follow the directions below to improve your Camellia Stock.



ESTABLISHED 1939



OUR NURSERY: 8 Cattai Ridge Road, Glenorie NSW 2157

Phone: (02) 9652 1200

Fax: (02) 9652 2740

NURSERY TRADING HOURS

OPEN 7 DAYS 9am-4pm

Browse our website at: <http://www.camelliagrove.com.au>





Neutrog Products Are:



Nicky Crisp and Friend



JUNE MEETING AND BLOOM COMPETITION RESULTS



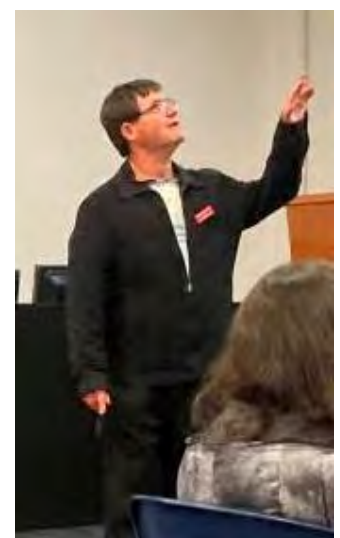
Novice Champion,
Aspasia Macarthur,
Bruce Walker



Open Champion,
Lovelight,
Bill Fleming



Lucky Door Prize Winner,
Yuletide,
Richie Griffiths



Making his Presentation.
Secretary of the ARK
Dr Stephen Utick

Seen on the Benches



Informal Double



Single



Collection, Elegans



Irregular Semi-Double



MONTH	MEMBER	PTS	SAS	SPR/MINS	RETICS	GRADE	TOTAL/ MNTN
June	J. Cavanagh	2	6			N	8
	M. Hall		1			N	1
	S. Marker	4		1		0	5
	C. & D. Low	11		3		0	14
	W. Fleming	15		2		0	17
	E. Fuller	6				0	6
	J. Muras	1		3		0	4
	R. Griffiths	3			6	0	9
	B. Walker	17			3	N	20
	J. McGill	9	2	3		0	14
	P. Watson	5				0	5

BLOOM COMPETITION AND RULES 2022

Class	Description	Jul	Aug	Sep
4	Sasanqua any form			
5	Japonica/Hybrid Single	✓	✓	✓
6	Japonica/Hybrid Semi-double	✓	✓	✓
6A	Japonica / Hybrid Irregular Semi-Double	✓	✓	✓
7	Japonica/Hybrid Elegans Form	✓	✓	✓
8	Japonica/Hybrid Informal Double	✓	✓	✓
9	Japonica/Hybrid Formal Double	✓	✓	✓
10	Japonica/Hybrid Miniature	✓	✓	✓
12	Reticulatas & their hybrids			
15	Other not listed	✓	✓	✓
16	Clusters & sprays of multi-flowered species & hybrids	✓	✓	✓
17	New seedling or sport (1 to 3 blooms)	✓	✓	✓
C2	Collection: Any camellia, any form, 3 blooms	✓	✓	✓

Classes

Classes 1 to 15: one bloom, with a maximum of 2 attached leaves

Classes C1 & C2: a collection of 3 blooms, with a maximum of 2 attached leaves

Competition

A 'Novice' exhibitor has not won the annual 'Novice' championship, nor have they scored 20 points in a monthly 'Open' competition. The competition year starts in March, and a 'Novice' in March remains so to the end of that year. A bloom exhibited by a 'Novice' can win in 'Open' classes.

Points

'Open' and 'Novice' Classes 1 to 16: 1st = 3 points; 2nd = 2 points; 3rd = 1 point (if required)

'Open' and 'Novice' Collections Classes C1 to C2: 1st = 6 points; 2nd = 4 points; 3rd = 1 point (if required)

'Open' and 'Novice' Champion bloom (from the winning blooms) Extra 3 points.



MONTHLY MEETING SCHEDULE 2022 (CHANGES TO BE NOTIFIED)

July 2022	
Thursday 7 th	Show Setup from 9.00am
Saturday 9 th and Sunday 10 th	NSW CRS Annual Show Details above
Saturday 16 th and Sunday 17 th	Illawarra Annual Show
Monday 18 th	NSWCRS Monthly Meeting (Deferred for Show Month) <i>Gordon Baptist Church, 20-22 Park Ave, Gordon 7pm benching of blooms for 7.30 meeting. Speaker TBA</i>
Sunday 24 th	Lisgar Gardens Open Day Camellia Gala Day, 11.00am-3.00pm. Bring blooms for the NSWCRS Display Tables
Monday 25 th	Visit to "Mirrabooka" Castle Hill Details above!!!
August 2022	
Sunday 21 st	NSWCRS Monthly Meeting (Always 3rd Monday of Month) <i>Gordon Baptist Church, 20-22 Park Ave, Gordon 7pm benching of blooms. Speaker TBA</i>
September 2022	
Thursday 1 st -Sunday 4 th	National Congress, Hobart. Details available from Bruce or Helen or Joe jneuschwanger@optusnet.com.au
Monday 19 th	NSWCRS Monthly Meeting (Always 3rd Monday of Month) <i>Gordon Baptist Church, 20-22 Park Ave, Gordon 7pm benching of blooms for 7.30 meeting. Speaker TBA</i>
October 2022	
Monday 17 th	NSWCRS AGM 7.30pm. <i>Gordon Baptist Church, 20-22 Park Ave, Gordon.</i>
November 2022	
	Annual Dinner and Presentations. Date and Location TBA



NSWCRS COMMITTEE CONTACT DETAILS 2020-2021

Patron:	Her Excellency Professor The Honourable Dame Marie Bashir AD CVO	
President:	Bruce Walker	T: 0412 588 719 E: bfwalks2@tpg.com.au
Vice President:		
Secretary:	Helen Wallace	M: 0404 721 572 E: helen_wallace@optusnet.com.au
Treasurer:	Julie Hood	T: 94118569 E: jhoodmazlin@gmail.com
Public Officer:	Richie Griffiths 39 Hazelmead Rd, Asquith NSW 2077	M: 0418 200 139 E: rgriffiths@ryde.nsw.gov.au
Newsletter Editor & Membership Secretary	Daniel Low	T: 99883280 E: nswcamellias@hotmail.com
Librarian:	Bill Fleming	E: wfleming999@gmail.com
Committee:	Bruce Walker (President)	Helen Wallace (Secretary)
	Julie Hood (Treasurer)	Juliet Muras
	Daniel Low (Newsletter Editor and Membership Secretary)	Margaret Levick (Fellow NSW CRS)
	Richie Griffiths (<i>Public Officer</i>)	Judith McGill
National Councillors:	Yet to be nominated	
ABN:	16 873 158 367	
Incorporation No.:	Y17693-47	

MORE JULY BLOOMS

D AND C. LOW

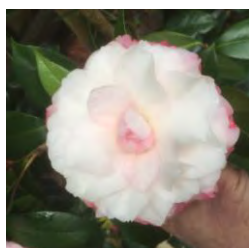
Well, its happened again, The Fall Edition of the Southern California Camellia Society's Journal is out and Editor, Bradford King has featured, among others, ten varieties we have in our garden: Nuccio's Gem, Silver Waves, Nuccio's Pearl, Buttons 'N' Bows, E.G. Waterhouse, Dr Clifford Parks, Kanjiro, Egao, Hagoromo and Man Size



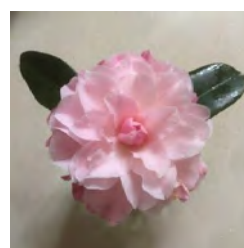
Nuccio's Gem



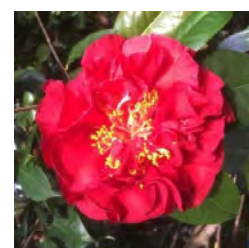
Silver Waves



Nuccio's Pearl



Buttons 'N' Bows



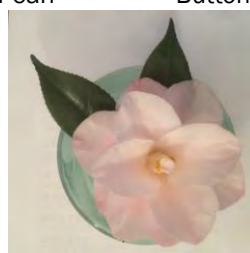
Dr Clifford Parks



Kanjiro



Egao



Hagoromo



Man Size



WHAT'S ON AT ERYLDENE



5 August 2022

Fridays in the Garden

Want to see what goes on in the Eryldene garden between open days?

7 August 2022

Music on Sundays

Join us at Eryldene for live music from 1.00 till 5.00 pm.

2 September 2022

Fridays in the Garden

Want to see what goes on in the Eryldene garden between open days?

4 September 2022

Art on Sundays

Hear and learn from artists currently practising across the wider Sydney community.

7 October 2022

Fridays in the Garden

Want to see what goes on in the Eryldene garden between open days?

9 October 2022

Music on Sundays

Join us at Eryldene for live music from 1.00 till 5.00 pm.

4 November 2022

Fridays in the Garden

Want to see what goes on in the Eryldene garden between open days?

6 November 2022

Art on Sundays

Hear and learn from artists currently practising across the wider Sydney community.



YES ITS ON AGAIN, LISGAR GARDENS OPEN DAY, CAMELLIA GALA DAY

SUNDAY 24TH JULY, 11.00AM-3.00PM

Friends of Lisgar Gardens are holding their Open Day again and our Society is helping by having Camellia Display Tables, You can assist by bringing Blooms with Labels, Volunteering to answer camellia related enquiries and promoting membership in our society.

Bruce or Richie will work out a roster for those who can make it on the day.



SEA more from your garden all year round.



Seamungus is a fantastic product that is suitable throughout your garden.

A garden that receives a regular feed of fertiliser through every season ensures that your plants have access to the nutrients they need, as soon as they need them.



The potent combination of ingredients in Seamungus, including three different types of kelp, along with poultry manure and humates will improve your soil and the resilience of your plants to stress.

Seamungus is available as both pellets and liquid.



Year round
fertilising for
year round
health



NEUTROG
Biological Fertilisers

Freecall 1800 65 66 44 www.neutrog.com.au