

INSIDE
THE APRIL 2022
ISSUE

PG. 2

President's Report April
A is for April . . .

PG. 3

Ikebana International Luncheon

PG. 5

Bloom Competition Rules 2022

PG. 6

March Competition Results

PG. 7

Meeting Schedule 2022

PG. 8

NSW CRS Committee 2022

PG. 9

What's Flowering at "Eryldene"



'Burghundy Blush' – not a "Blushing Beauty"

The April meeting
is coming up on
TUESDAY 26th

Let's have a
bumper rollup.

Members please bring a
Plate

APRIL REPORT NEUTROG

Neutrog's Representative Helen Lovel will be in attendance at our April meeting to talk about the history of Neutrog and the development of their Biological Products.

It should be a very interesting talk and I encourage all members to try to attend.

Apologies for the lack of Photos from the Bloom Competition



PRESIDENT'S REPORT, MARCH 2022

The rain did stop in Sydney, for 3 days, maybe 4. But it has started again!!

It was pleasing to see many Blooms on the tables at our March meeting, which was attended by 16 members. Richie Griffiths gave a presentation to our meeting on the importance of Drainage to success with growing camellias. Thanks Richie. For pots that are struggling with being over wet, repotting might be a solution worth trying. Otherwise, three commandments are: drainage, drainage, drainage.



Our next meeting has been confirmed for Tuesday 26th April 2022, usual time. Our usual hall is used by table tennis players on Tuesday evenings so we will be meeting upstairs in the room above the hall. Access is via stairs near the entry or by lift adjacent. The meeting will have a presentation by Helen Lovell of Neutrog, who are sponsors of our Society. We are hoping that there will be some product samples available for those present at the meeting.

As noted later in the Newsletter we have an interesting talk lined up for our June meeting.

See you after Easter, happy gardening

Bruce Walker



IS FOR APRIL AND ANY IN BLOOM

PHOTOS: D. LOW



Yoi Machi



Weroona



Tama No Ura



Stan Jones



Slim 'N' Trim



Showgirl



Punicaeflora



Paradise Sylvia



IKEBANA INTERNATIONAL SYDNEY CHAPTER 63rd ANNIVERSARY LUNCHEON

On St Patrick's Day The Sydney Chapter Ikebana International held its 63rd Anniversary Luncheon. President Hiroko Prado welcomed the Guest of Honour and Guest Speaker His Excellency, Mr Kiya Masahiko, Consul-General of Japan. Special Guests were Mrs Mikiko and her daughter Moe Hanasaki, representing Japan Airlines. Mr Kiya spoke about all people having things in common but there are regional and individual differences between countries. It is just the same with plants and especially when people come from other lands and see our very different flowers in Australia. Australia's strength is that it embraces people and their traditions from other countries including Japan.



Part of the members' display:

Hiroko Prado, Sogetsu

Faye Brock, Ohara

Sue Wong, Sogetsu

Elizabeth Fuller, Sogetsu

Guests were all then treated to a series of demonstrations of creating Ikebana in the styles of a number of different schools. Firstly, Kuniko Nakano, (who had been a member of our Society some time ago) demonstrated the Ohara School Method which first and foremost respects nature. Using Dianthus as the focus, she constructed an autumn landscape and emphasised that each person's personality is reflected in their arrangement. Kuniko uses a lot of different material to create structure from flat fern representing mosses on the ground to tall grasses to give contrasting height.

Secondly, NSW CRS member, Jenny Goodwin, from the Sogetsu School related how she had seen an interesting demonstration using other than plant material. With this in mind she had taken a newspaper with a green front page to give it a plant-like effect. It was torn into strips which did not quite go right through making it look (to my mind) like a horse's mane. It was inserted into a tallish vase that had a slit down one side. That slit provided the support for the stem of a pale blue hydrangea. I was very different and very subtle.



Kiya and Megumi



Leela, Kiya, Hiroko and Pat



Junko



Jenny



Mrs Leela Venkataraman then demonstrated an arrangement in the Ikenobo style. Ikenobo was the original school of Ikebana. The essential element is simplicity. The material is arranged facing the artist and it is only rotated to the viewers on completion. Leela made use of native Curly Grass, carnations and a small stem of miniature umbrella tree.

Famed bonsai artist Megumi Bennett is also a well-known exponent of the Koryu school of Ikebana. On the advice of the Consul she chose a stark black vase for her arrangement so it would stand out. She explained that this school started in the 18th century in Edo. Plant material is held with a Kenzan so it will be sensitive but accurate. The placement takes a natural line of the flowers which in this case were Chrysanthemums. To impart more movement the stems are let dry out for about two hours so they can be gently bent to the desired shape, knowing that when complete and water is reintroduced the leaves in particular will return to a normal position and not look wilted.

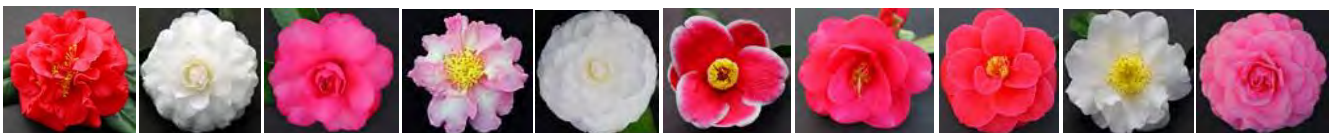
Ms Junko Daniels from the Sogetsu School chose the colours of the Japanese flag for her theme. A very tall vase had white pieces of vine sticking upwards about 5cm above the vase rim. These stems then held a wide mass of white painted vines which formed the structure into which she inserted Baby's Breath. Finally yellow Lilliums were added as a contrast.

Finally, IPP Mrs Pat Walters created a "Very Quick" arrangement on two fan shaped bases. The material was supported in a piece of driftwood and surrounded by white gravel infilled with white sand. The arrangement used red and white for celebration. White lilies contrasted with the red and the black fans while structure was created with red maple leaves and bracken fern.

The demonstration was followed by the Bento Box and champagne luncheon which was appreciated by all in attendance.

Camellia Grove Nursery

ESTABLISHED 1939



OUR NURSERY: 8 Cattai Ridge Road, Glenorie NSW 2157

Phone: (02) 9652 1200

Fax: (02) 9652 2740

NURSERY TRADING HOURS

OPEN 7 DAYS 9am-4pm

Browse our website at: <http://www.cameliagroove.com.au>





BLOOM COMPETITION AND RULES 2022

Class	Description	Apr	May	Jun	Jul	Aug	Sep
1	Sasanqua Single	✓					
2	Sasanqua Formal Double & Elegans Form	✓					
3	Sasanqua other forms	✓					
4	Sasanqua any form		✓	✓			
5	Japonica/Hybrid Single	✓	✓	✓	✓	✓	✓
6	Japonica/Hybrid Semi-double	✓	✓	✓	✓	✓	✓
6A	Japonica / Hybrid Irregular Semi-Double	✓	✓	✓	✓	✓	✓
7	Japonica/Hybrid Elegans Form	✓	✓	✓	✓	✓	✓
8	Japonica/Hybrid Informal Double	✓	✓	✓	✓	✓	✓
9	Japonica/Hybrid Formal Double	✓	✓	✓	✓	✓	✓
10	Japonica/Hybrid Miniature	✓	✓	✓	✓	✓	✓
11	Japonica/Hybrid any form						
12	Reticulatas & their hybrids	✓	✓	✓			
13	Reticulatas & their hybrids up to 130mm				✓	✓	✓
14	Reticulatas & their hybrids over 130mm				✓	✓	✓
15	Other not listed	✓	✓	✓	✓	✓	✓
16	Clusters & sprays of multi-flowered species & hybrids	✓	✓	✓	✓	✓	✓
17	New seedling or sport (1 to 3 blooms)	✓	✓	✓	✓	✓	✓
C1	Collection: Sasanqua, any form, 3 blooms	✓					
C2	Collection: Any camellia, any form, 3 blooms	✓	✓	✓	✓	✓	✓

Classes

Classes 1 to 15: one bloom, with a maximum of 2 attached leaves

Classes C1 & C2: a collection of 3 blooms, with a maximum of 2 attached leaves

Competition

A 'Novice' exhibitor has not won the annual 'Novice' championship, nor have they scored 20 points in a monthly 'Open' competition. The competition year starts in March, and a 'Novice' in March remains so to the end of that year. A bloom exhibited by a 'Novice' can win in 'Open' classes.

Points

'Open' and 'Novice' Classes 1 to 16: 1st = 3 points; 2nd = 2 points; 3rd = 1 point (if required)

'Open' and 'Novice' Collections Classes C1 to C2: 1st = 6 points; 2nd = 4 points; 3rd = 1 point (if required)

'Open' and 'Novice' Champion bloom (from the winning blooms) Extra 3 points.



MARCH BLOOM COMPETITION RESULTS

MONTH	MEMBER	PTS	SAS	SPR/MINS	GRADE	TOTAL
MARCH	B. Walker	9	8		N	17
	J. Muras	2	2	3	0	7
	D. Low	5			0	5
	J. McGill	10	8		0	18
	C. Field		1		N	1
	R. Griffiths	6			0	6



Richie Griffiths winning collection of 'Paradise Pearl'

This month's Open Champion was Judith McGill with Pure Silk and Novice Champion was Bruce Walker with a similar bloom.

Neutrog Products Are:



Miinato No Akebono



Lady Loch



Egao



Creek

**MONTHLY MEETING SCHEDULE 2022 (CHANGES TO BE NOTIFIED)**

April 2022	
Tuesday 26th	NSWCRS Monthly Meeting <i>Gordon Baptist Church, 20-22 Park Ave, Gordon 7pm</i> <i>benching of blooms for 7.30pm meeting</i> Speaker: Helen Lovel from Neutrog
May 2022	
Monday 16th	NSWCRS Monthly Meeting (Always 3rd Monday of Month) <i>Gordon Baptist Church, 20-22 Park Ave, Gordon 7pm</i> <i>benching of blooms for 7.30 meeting.</i> Speaker TBA
June 2022	
Monday 20st	NSWCRS Monthly Meeting (Always 3rd Monday of Month) <i>Gordon Baptist Church, 20-22 Park Ave, Gordon 7pm</i> <i>benching of blooms for 7.30 meeting.</i> Speaker: Dr Stephen Utick "Progress of Camellia Ark Australia: the connections to collections".
July 2022	
Saturday 9th and Sunday 10th	NSW CRS Annual Show. Details to follow
Saturday 16th and Sunday 17th	Illawarra Annual Show
Monday 25th	NSWCRS Monthly Meeting (Deferred for Show Month) <i>Gordon Baptist Church, 20-22 Park Ave, Gordon 7pm</i> <i>benching of blooms for 7.30 meeting.</i> Speaker TBA
August 2022	
Monday 15th	NSWCRS Monthly Meeting (Always 3rd Monday of Month) <i>Gordon Baptist Church, 20-22 Park Ave, Gordon 7pm</i> <i>benching of blooms.</i> Speaker TBA
September 2022	
Monday 19th	NSWCRS Monthly Meeting (Always 3rd Monday of Month) <i>Gordon Baptist Church, 20-22 Park Ave, Gordon 7pm</i> <i>benching of blooms for 7.30 meeting.</i> Speaker TBA
October 2022	
Monday 17th	NSWCRS AGM 7.30pm. <i>Gordon Baptist Church, 20-22 Park Ave, Gordon.</i>
November 2022	
	Annual Dinner and Presentations. Date and Location TBA

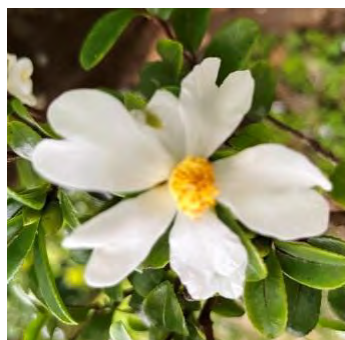


NSWCRS COMMITTEE CONTACT DETAILS 2020-2021

Patron:	Her Excellency Professor The Honourable Dame Marie Bashir AD CVO	
President:	Bruce Walker	T: 0412 588 719 E: bfwalks2@tpg.com.au
Vice President:		
Secretary:	Helen Wallace	M:0404 721 572 E:helen_wallace@optusnet.com.au
Treasurer:	Julie Hood	T: 94118569 E: jhoodmazlin@gmail.com
Public Officer:	Richie Griffiths 39 Hazelmead Rd, Asquith NSW 2077	M: 0418 200 139 E:rgriffiths@ryde.nsw.gov.au
Newsletter Editor & Membership Secretary	Daniel Low	T: 99883280 E: nswcamellias@hotmail.com
Librarian:	Bill Fleming	E:wfleming@primusononline.com.au
Committee:	Bruce Walker (President)	Helen Wallace (Secretary)
	Julie Hood (Treasurer)	Juliet Muras
	Daniel Low (Newsletter Editor and Membership Secretary)	Margaret Levick (Fellow NSW CRS)
	Richie Griffiths (<i>Public Officer</i>)	Judith McGill
National Councillors:	Yet to be nominated	
ABN:	16 873 158 367	
Incorporation No.:	Y17693-47	



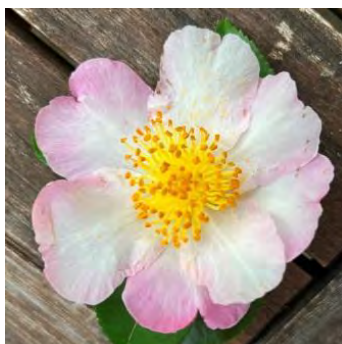
Bonanza



Brevistyla



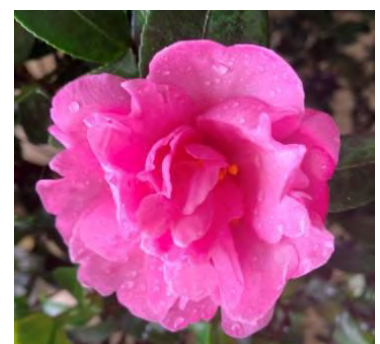
Cleopatra White



Dans Johanna



Exquisite (Waterhouse)



Marge Miller



WHAT'S FLOWERING NOW AT ERYLDENE

PHOTOS: J. MURAS



Weroona



Benizuru



University Red



Jean May



JUST THE SHOT FOR A WINTER BOOST

Just give it a GOGO!



You won't really know
if you don't give it a go.

- Feed the soil
- Maximise nutrients available to plants
- Increase resistance to pests and disease
- Reduce heat and frost stress

Apply GOGO Juice year round to all pots, garden beds and lawn areas.

A concentrated pro-biotic liquid for your soil & plants

NEUTROG®
Biological Fertilisers

Freecall 1800 65 66 44 www.neutrog.com.au



DRAINAGE, DRAINAGE & DRAINAGE

RICHIE GRIFFITHS

What is Drainage

- It is the movement of water both on the surface and through the soil profile.
- It can be natural, artificial or constructed
- It can take water away from a site or direct to a collection point(eg dam or reservoir)

Why is Drainage so important

- Removes excess water and prevents flooding
- Allows air /water ratio to prevail in soil
- Provides the ability of soil to flush salts etc from root zone
- Maintains soil structure
- an optimum water level for root
- Allows areas to be usable

Some basic terms

- Field capacity
- Surface run off
- Infiltration
- Percolation
- Capillary action
- Gravitational water

What affects Drainage

- Soil type/texture
- Topography and grade
- Compaction
- Sub surface barriers (natural and artificial)
- Cost

How do I improve drainage

- Surface – include swales to direct water, contours to slow flow, mound planting areas, construction of gutters
- Sub surface – installation of drainage pipe, construction of walls and barriers, creation of sumps and reservoirs, incorporation or sand and gravel trenches



Classique



Gwen Pike



Plantation Pink



Kahoonna

NEUTROG™
The Experts' Choice

Ideal for acid loving plants.

