

NSW Camellia  
Research Society  
NEWSLETTER

ISSN: 2207-6883

INSIDE  
OCTOBER  
ISSUE

PG. 2

President's Report

PG. 3

President's AGM report

PG. 5

Monthly meeting schedule

PG. 6

October monthly meeting flyer

PG. 7

September meeting blooms

PG. 9

Committee member details

PG. 10

Membership renewal

PG. 11

Christmas and Presentation evening



SEPTEMBER MEETING  
CHAMPION BLOOMS:

OPEN (left):  
New day rise:  
Richie Griffith

NOVICE (right):  
Kramers Supreme:  
Frank Appleton

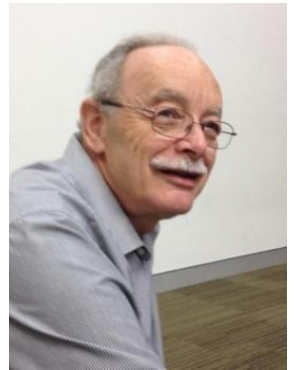
A CAMELLIA JAPONICA IN FULL BLOOM LOCATED IN BLACKHEATH





## PRESIDENT'S REPORT

---



September, well it all became much more peaceful in the camellia world elsewhere, but in our garden it has been a time of “much to do and not enough time to do it”. Plants are putting on their spring growth and the winter boost of Seamungus is helping. There were also scions to graft and we’re mainly trying whip and tongue as demonstrated by Craig Carroll which could lead to some interesting plants with a number of different flowers on one plant.

By the time this newsletter arrives our society should have in hand the first Royalty Payment from Neutrog. I guess it will be for three months and whether that becomes monthly or the same will be up to their financial management.

We regularly receive email copies of other society newsletters. Should you wish to have them forwarded to you, let me know and I’ll make up a special email list.

All seems to be in hand for the AGM.

The AGM will start at 7.30 PM and will be followed by our regular Monthly Meeting.

If you intend to exhibit in the flower display (details below) come earlier to place your flowers.

### **Two reminders to members**

Firstly we have received our first Royalty payment from Neutrog and our Agreement is dependent on this part of the Agreement:

**“This is for the benefit of NSWCRS members only. . .”.**

Secondly membership renewals will be due after the AGM in October 2019, for 2020.

Instead of our monthly Camellia bloom competition we will have a “popular-vote flower / floral arrangement” competition. You are invited to bring along:

- (1) a Camellia,**
- (2) a single flower stem,**
- (3) a vase of flowers, or any other container (such as a basket),**
- (4) a potted plant to show.**

Bring your own containers, etc. No prizes—just honour and glory!

Following the popular vote for the winners of each category we will have supper. I ask members to bring a plate to provide a convivial end to the evening.



## PRESIDENT'S REPORT FOR THE AGM OF THE NSW CAMELLIA RESEARCH SOCIETY

---

This has been a very eventful year for all of us in the NSW Camellia Research Society.

Having only a Committee and a number of executive to be appointed we were in a rather unusual position from the 2018 AGM until the first Committee Meeting on the 22<sup>nd</sup> October 2018.

By May we had:

- President – Daniel Low
- Vice-President – Rachel O’Conor
- Secretary – Helen Wallace
- Treasurer – Julie Hood
- Public Officer – Richie Griffiths
- Newsletter Editor – Erin Foulsham
- Membership Secretary – Carolyn Low
- IPP – Wendy Sadler-Moyes
- Committee Members – Margaret Levick and Juliet
- Ex-Officio – Librarian, Bill Fleming and Judging Coordinator, Marion Moyes

The March meeting saw our ties to Neutrog taking shape with Paul DiPuglia as our first Guest Speaker for the year. He brought prizes and freebies and the Bloom Competition was now underway.

April saw the show organization well in hand with our special guests confirmed and pre-show tasks being covered.

In May some of us were in for a special treat when Kevin Walpole opened his house to those members who could make it on the excursion. The depth of experience held by members of our society was by now being shown as month by month our own members were able to take up the request to be a guest speaker and their informative presentations were always warmly acknowledged. Thanks to: Keith and Maureene Smith from The Propagating Gardener, Chris Chapman – On Showing Blooms, Lesley Saddington – Maintaining a Healthy Garden and Camellia Pests and Diseases, Craig Carrol - on Camellias and Grafting, Richie Griffiths - on Potting Up Camellias and providing reticulata Scions, also Bill Fleming who brought Scions as well and Tony Curry- on Camellia Trails.

In June we finalized our arrangement with Neutrog and we put into place the various items they requested regarding promotion of their products. Following the agreement I was interviewed twice during the year by Graham Ross on Radio 2GB.

July was the busiest month I’ve ever experienced in the society. Our show went off so well thanks to all of those members who could contribute in so many ways. Our Patron, Dame Marie and our special guest Keizo Takawaka were greatly impressed by the whole occasion. We were able to source The Ravenswood camellia for our Show and a number of Unryu Tsubake to sell at our Bonsai Display.

Now the all of our camellia world was into its stride for shows throughout the state. Some of our members travelled to show off with pride, the results of their care and commitment to the genus. The last show was the National in conjunction with the National Congress at Young. A number were successful at various levels in a number of shows gaining from place certificates right through to Champion Bloom in Show or Class. Well done to Chris and Helen Chapman, Ritchie Griffiths and Carolyn and myself.



This year a number of members supported “Eryldene” through assistance with the garden and their numerous activities. As well we contributed at their Board meetings with the attendance of a number of our members and especially in their long-term planning process. We put up a very fine display at Lisgar Gardens and all of these activities assisted in our gaining a number of new single and household members.

During the year I was invited to address the Willoughby Garden Club as well as Ku-Ring-Gai Horticultural Society on two occasions: to inform them about our upcoming show in June and will again early in October to address them with a slide show about our search for camellias in Europe in 2018. We were also invited to the Special Sogetsu Ikebana Show at the Royal Botanic Gardens.

The complete details of our year’s activities can be seen by referring to our newsletters where most are also illustrated.

I would like to conclude by expressing my heartfelt thanks to all of the committee especially Carolyn for taking a lot of the stress off my shoulders when I was in and out of hospital in the recent months.

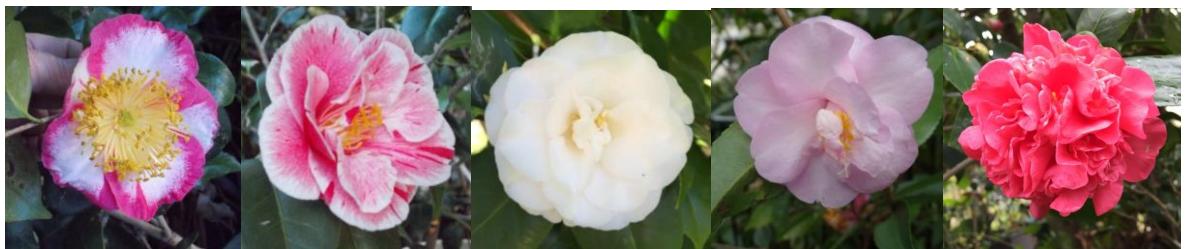
Daniel Low

President, 2018-2019

28/09/2019



Is for October and....



Okan (Higo)

Oki No Nami

Onetia Holland

Our Melissa

Otahuhu Beauty



MONTHLY MEETING SCHEDULE 2019 & 2020

<b>October 2019</b>	
Monday, 21 <sup>st</sup>	<b>NSWCRS AGM (Always 3<sup>rd</sup> Monday of Month)</b> <i>Gordon Baptist Church, 20-22 Park Ave, Gordon</i> <i>7pm benching of what's blooming in your garden (not necessarily camellias); 7.30pm meeting start.</i> <b>Please note: Neutrog orders close today</b>
<b>November 2019</b>	
Wednesday 20 <sup>th</sup>	<b>Annual Dinner</b> Killara Golf Club 556 Pacific Highway, Killara 7:30pm \$60pp (includes table wine)
<b>2020</b>	
<b>February 2020</b>	
Saturday 22 <sup>nd</sup>	<b>Meeting at Eryldene</b> <i>17 Macintosh St, Gordon</i> <i>2:30pm</i>
<b>March 2020</b>	
Monday, 16 <sup>th</sup>	<b>NSWCRS Monthly Meeting (Always 3<sup>rd</sup> Monday of Month)</b> <i>Gordon Baptist Church, 20-22 Park Ave, Gordon</i> <i>7pm benching of blooms</i> <b>Speaker TBA</b>
<b>April 2020</b>	
Monday 20 <sup>th</sup>	<b>NSWCRS Monthly Meeting (Always 3<sup>rd</sup> Monday of Month)</b> <i>Gordon Baptist Church, 20-22 Park Ave, Gordon</i> <i>7pm benching of blooms</i> <b>Speaker TBA</b>



**OCTOBER NSWCRS  
MONTHLY MEETING  
&  
AGM**

**MONDAY, 21<sup>st</sup> OCTOBER  
GORDON BAPTIST CHURCH,  
20-22 PARK AVE, GORDON**

**Fun bloom and plant competition 7pm  
Camellia•single stem•flowers•potted plant  
AGM commences 7:30pm**



## SEPTEMBER MONTHLY BLOOM COMPETITION BLOOMS



Virgina Franco Rosea: C & D Low



Tamsin Coull: Richie Griffiths



Little Deb: C & D Low



Elegans Splendor: Bill Flemming



Lovely Lady: Richie Griffiths





## NSWCRS COMMITTEE CONTACT DETAILS

<b>Patron:</b>	Her Excellency Professor The Honourable Dame Marie Bashir AD CVO Apt 3 / Level 8 THE ASTOR 123 Macquarie Street SYDNEY NSW 2000	
<b>President:</b>	Daniel Low 2 Narelle Avenue Pymble NSW 2073	H: 99883280 E: <a href="mailto:nswcamellias@hotmail.com">nswcamellias@hotmail.com</a>
<b>Vice President:</b>	Rachel O'Connor PO Box 9 Killara NSW 2071	H: 94982227 E: <a href="mailto:oconor@tpg.com.au">oconor@tpg.com.au</a>
<b>Secretary:</b>	Helen Wallace 41 Hewitt Street Wahroonga NSW 2076	M: 0404 721 572 E: <a href="mailto:helen_wallace@optusnet.com.au">helen_wallace@optusnet.com.au</a>
<b>Treasurer:</b>	Julie Hood 45/10 Murray Street Lane Cove North NSW 2066	H: 94118569 E: <a href="mailto:jhoodmazlin@gmail.com">jhoodmazlin@gmail.com</a>
<b>Public Officer:</b>	Richie Griffiths	
<b>Newsletter Editor:</b>	Erin Foulsham 4 Mahratta Avenue Wahroonga NSW 2076	E: <a href="mailto:erinfoulsham@gmail.com">erinfoulsham@gmail.com</a>
<b>Librarian:</b>	Bill Fleming 21 Fishburn Road Galston NSW 2159	E: <a href="mailto:wffleming@primusononline.com.au">wffleming@primusononline.com.au</a>
<b>Membership Sec.</b>	Carolyn Low 2 Narelle Avenue Pymble NSW 2073	E: <a href="mailto:nswcamellias@hotmail.com">nswcamellias@hotmail.com</a>
<b>Committee:</b>	Daniel Low ( <i>President</i> )	Erin Foulsham ( <i>Newsletter Editor</i> )
	Rachel O'Connor ( <i>Vice President</i> )	Margaret Levick <i>Fellow</i>
	Helen Wallace ( <i>Secretary</i> )	Wendy Sadler-Moyes ( <i>Immediate Past President</i> )
	Julie Hood ( <i>Treasurer</i> )	Juliet Muras
	Richie Griffiths ( <i>Public Officer</i> )	Carolyn Low ( <i>Membership Secretary</i> )
<b>Judging Coordinator Ex-officio</b>	Marion Moyes	E: <a href="mailto:mmoyes4@bigpond.com">mmoyes4@bigpond.com</a>
<b>National Councillors:</b>	Daniel Low and Carolyn Low	
<b>ABN:</b>	16 873 158 367	
<b>Incorporation No.:</b>	Y17693-47	



## MEMBERSHIP

Membership fees for 2020 are **due on 1st November 2019**. The following table outlines membership fees:

Membership type	Emailed newsletter*	Black & white posted newsletter**
Single	\$30	\$60
Household	\$40	\$70
Life members	Free	\$30
*Included as part of all memberships		
**An additional fee of \$30 covers expenses of printing & postage		

**Payments Methods: Via Internet Banking OR Via Direct Deposit over the counter at a Commonwealth Bank**

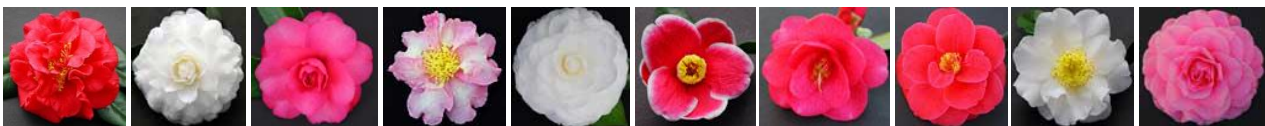
Account Name: NSWCRS

BSB: 062247 Account Number: 0090 0966

Put as a Reference: "RenewalYourSurname"



ESTABLISHED 1939



### OUR NURSERY

8 Cattai Ridge Road

Glenorie NSW 2157

Australia

Phone: (02) 9652 1200

Fax: (02) 9652 2740

### NURSERY TRADING HOURS

9am-4pm

OPEN 7 DAYS

Browse our website at:

<http://www.cameliagrovet.com.au>





NSWCRS Annual  
Christmas

&

Presentation night

Killara Golf Club

20<sup>th</sup> November 7.30pm

\$60pp (includes table wine)

\*see membership section for  
payment detail-reference:  
xmasdinner and surname



*The  
Collectors'  
Plant Fair*

**Hello Plant Hunters and Collectors,**

**Next Fair:**

**March 28 & 29, 2020**

**Saturday 8am-4pm**

**Sunday 9am-4pm**

**Hawkesbury Race Club, Clarendon, NSW**



- Stroll through the beautiful camellia garden
- Tour the house, and absorb early twentieth century history, culture and architecture
- Take Sunday Afternoon Tea as served by Mrs Waterhouse. Bookings recommended

# ENJOY ERYLDENE THROUGHOUT THE YEAR IN 2019



**Eryldene is open from 10am to 4pm on:**

**April 13-14**

Celebrate our 105th Birthday with FREE ENTRY  
View parts of the Collection not usually on display

**May 11-12**

Mothers Day Weekend, celebratory teas served from  
11.00am both days, bookings essential

**June 8-9 and July 13-14**

When most camellias are at their best

**August 10-11 and September 14-15**

For late camellias and azaleas

**November 23-24**

Eryldene Christmas Fair with over 50 unique stalls

Eryldene is also available for private booked tours,  
venue hire for weddings, events, and photography

**Book at [www.ticketebo.com.au/eryldene](http://www.ticketebo.com.au/eryldene)**



**ERYLDENE HISTORIC HOUSE AND GARDEN**

17 McIntosh Street, Gordon, NSW 2072  
[eryldene@eryldene.org.au](mailto:eryldene@eryldene.org.au) 02 9498 2271  
[www.eryldene.org.au](http://www.eryldene.org.au)





Kahoonna

**NEUTROG™**  
The Experts' Choice

Ideal for acid loving plants.

