

NSW Camellia Research Society NEWSLETTER

ISSN: 2207-6883

INSIDE THE JULY ISSUE

PG. 2

President's Report

PG. 3

50th Annual Show flyer

PG. 4

Historical posters

PG. 6

Camellia Pests and Diseases

PG. 8

Monthly meeting Schedule

PG. 8

Monthly competition Schedule

PG. 9

July meeting flyer

PG. 10

Monthly bloom competition classes

PG. 11

A visit to Keven Walpole's Garden



LADY GOWRIE- ARTWORK PAUL JONES

JUNE MEETING CHAMPION BLOOMS:

OPEN (left):
Virginia Franco Rosea:
Erin Foulsham

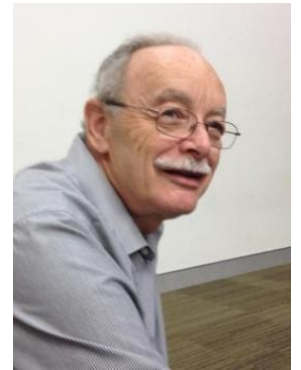
NOVICE (right):
Jamie:
Lesley Saddington





PRESIDENT'S REPORT

By the time you receive this Newsletter we will be on the verge of celebrating our 50th Anniversary Show. As I write, Richie is making great strides to ensure the Show's success. We hope to have an excellent turnout due to the presence of our Patron and entries from past winners who have been unable to attend in recent times. Richie has placed our Banners and the Customer Area Manager, Sydney Trains, in support of local communities, agreed to us placing A3 posters on North Shore stations.



The season seems to be turning around yet again and Japonicas are coming into their own as usual. Not sure about Retics though.

Last night Carolyn and I were invited to the Ku-Ring-Gai Horticultural Society to address the membership regarding our upcoming show. As an additional feature I was asked to assist in judging their monthly camellia competition which is one of about eight groups they have each night in the winter. Their camellias are entered in ten sections and Moira and I worked our way through at a fairly rapid rate. Before I spoke about the show I gave a brief summary of what I was looking for in the blooms. There were some good ones which were unfortunately lacking in presentation as I could not see the flower at its best due to being turned away from the viewer.

After a cuppa we were enthralled, like everyone else, by the special guest, Megumi Bennett – a bonsai sensei and Ikebana master, whom we've known for about twenty years, as she proceeded to "demolish" an Old Man Banksia as the beginning of its new life as a bonsai. We also had the opportunity to buy her biography by Mary Ann Napper, called "Nature's Child A life within Two Cultures".

A good night for all, and a chance to spread the word about our society to a wider audience. One bloom was brought to our attention. It was a white formal double and Carolyn thought it was Mrs Bell. As it turns out our infrequent-flowering one was out today and with the central boss opening up to show the stamens it was alike in all aspects. This is a very rare and old variety mentioned firstly in Shepherd's catalogue of 1879-grown by Mr G.A. Bell of St Leonards. Another rare one out this week is the Higo-Hinomaru "The Japanese Flag".



Mrs Bell

Hinomaru

Membership has reached 100 members!

Daniel Low
President, NSW Camellia Research Society



NSW Camellia Research Society Inc Presents its

50th Annual Camellia Show



At Ravenswood School for Girls,
Henry Street, Gordon

Saturday 13TH July 2019

1.30pm to 4.30pm

and

Sunday 14TH July 2019

10am to 4pm

Official Opening at 2.30pm on Saturday by

Professor The Honorable

Dame Marie Bashir AD CVO

Patron of the NSW Camellia Research Society

Occasional Address - His Excellency, Keizo Takewaka, Consul General of Japan

Admission: Adults - \$5 (includes a Lucky Door Prize) School children - Free

Featuring:

- Spectacular Display of Beautiful Camellias
- "Camellia Grove" Camellias for Sale and Camellia Plant Raffle Daily
- Beautiful Displays of Sogetsu Ikebana; Bonsai; Camellia Artifacts
- "Cut Above" Garden Tools for Sale
- Bring Your Camellias For Identification or Help with Pests and Diseases
- Potting Up and Pruning Demonstrations on Sunday Afternoon
- Light Refreshments for Sale

Enquiries: nswcamellias@hotmail.com or 9988 3280 (Daniel Low, President)

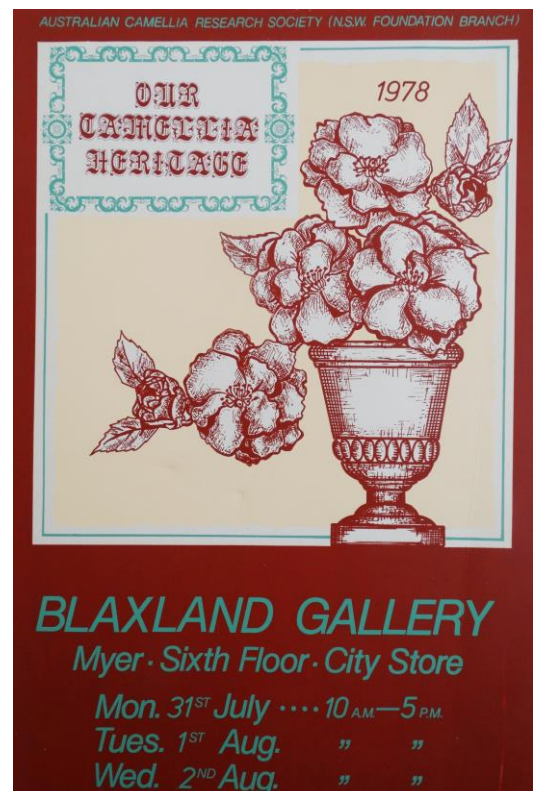
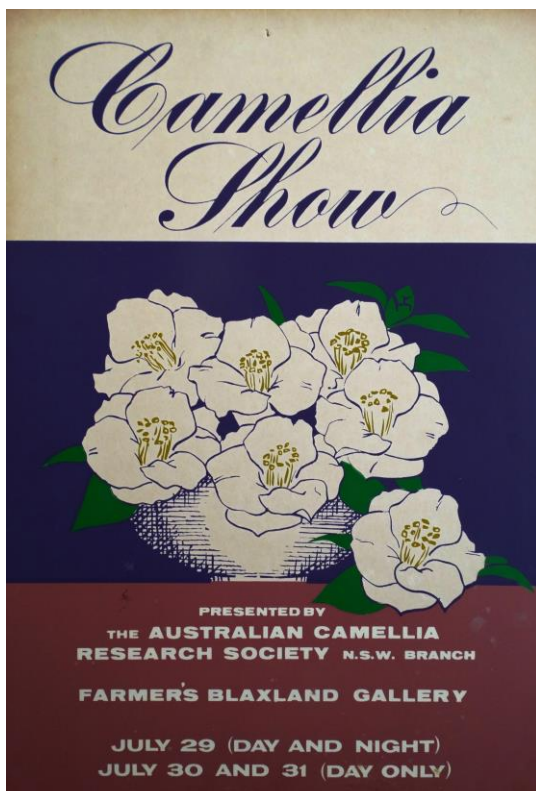
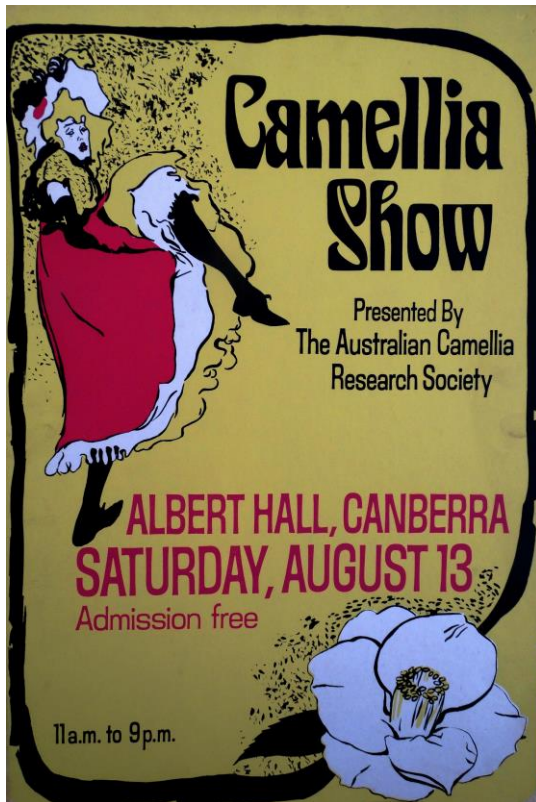
The NSW Camellia Research Society meets at Gordon Baptist Church the third Monday of each month (February to October). Visitors are most welcome.

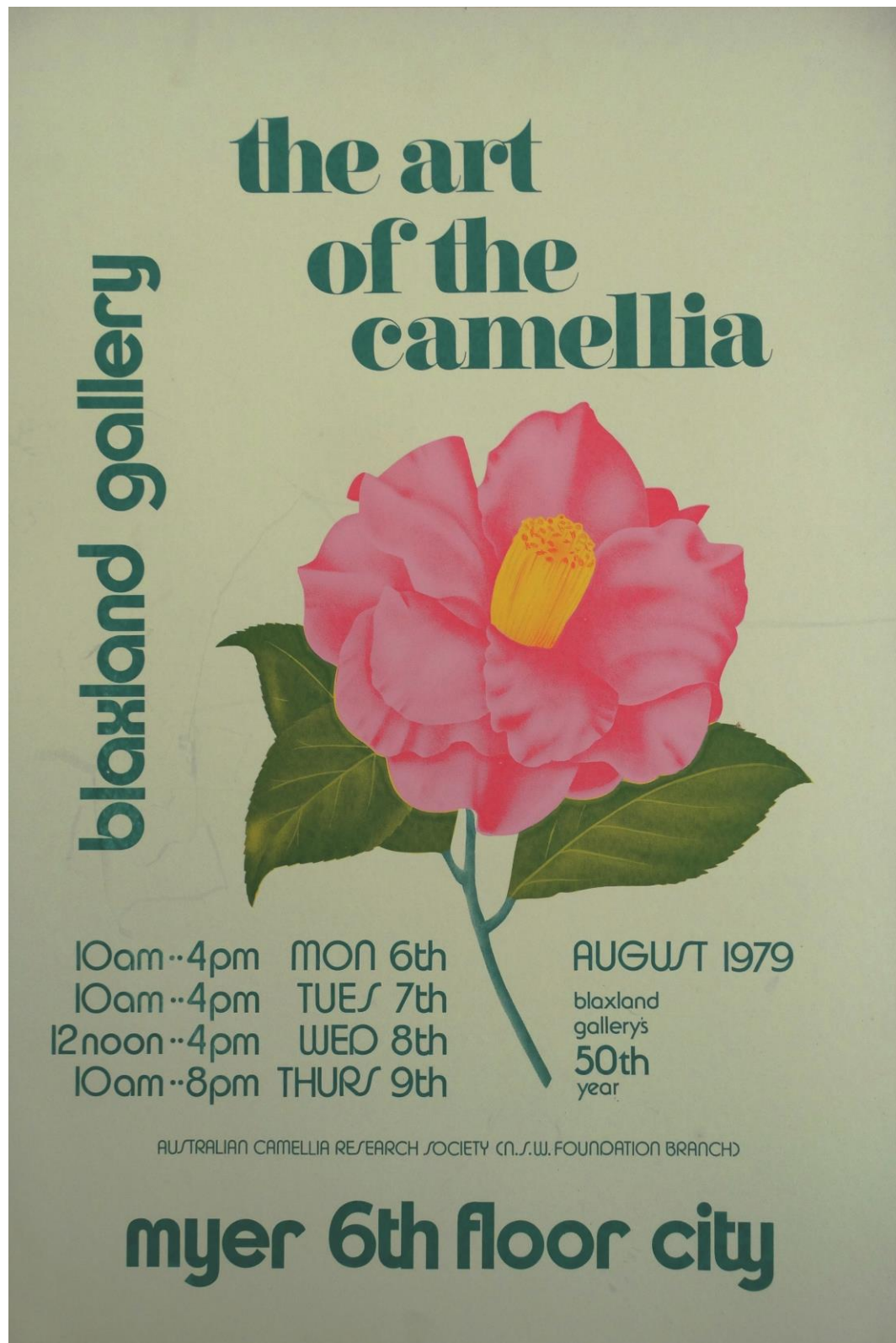
www.camelliasnsw.org.au





HISTORICAL CAMELLIA RESEARCH SOCIETY POSTERS





From Our Historical Vintage Poster Collection at the Show Courtesy Margaret Levick



PESTS AND DISEASES OF CAMILLIAS- LESLEY SADDINGTON (FAIH):

Camellias growing in favourable garden conditions in mixed plantings are least likely to be affected by pests and diseases. Monocultures, on the other hand, enable pathogens to spread easily from plant to plant.

- Well-drained friable soil with high organic matter content, mulched with leaf litter, will ensure a vigorous and healthy root system.
- Clay soils should be treated with gypsum and/or 'Clay-Breaker' prior to planting.
- Protection from exposure to extremes of sun, wind and shade will deter leaf pests and allow flowers to develop undamaged.
- Over- or under-watering should be avoided to allow the soil to aerate between waterings.

Pests and diseases

- **Insect pests** - cause approximately 25% of plant damage
- **Fungi, bacteria and viruses** - cause approximately 15%
- **Environmental factors** - responsible for 60%

Insect Pests

Insects remain dormant during winter, become active in early spring and cause most plant damage during early summer when their life cycles speed up to become less than 10 days from egg to next-generation egg. Eggs or dormant fertilized females over-winter on plants or in the soil/leaf litter beneath plants. Pesticide control is most effective from early December through summer and totally ineffective during winter (when damage is often most noticeable).

The damage caused by insects differs according to their method of feeding. Insects with sucking mouthparts, including mites, scales and bugs, suck sap from individual plant cells causing yellowing, browning or silvering of leaves. They excrete excess sap which causes black sooty mould fungus to grow on leaves.

Larger insects, including caterpillars, beetles and weevils, have chewing mouthparts. Their damage is readily visible as holes in leaves.

Aphids: Green, black or brown; cause curling and deformity of young leaves, usually in spring; small, winged sapsuckers; *parthenogenic* reproduction ensures speedy, massive population build-up; herded by ants for the honeydew (excess sap) they excrete; often protected by ladybirds – Hose off; encourage ladybirds; zap with light drift of Pyrethrum spray or spray with 'Confidor'.

Scale Insects: Many species, white, black or brown; symptom of dry, unfavourable growing conditions – Address habitat problems and spray with 'Pest-Oil' or 'Eco-Oil'

Spider Mites: Live on undersides of leaves; suck sap from plant cells, causing leaves to yellow & appear dry; visible on undersides of leaves using a hand-lens; favour warm, dry conditions; reproduce prolifically; symptom of unfavourable plant habitat (too dry, too shady); resistant to most insecticides – Improve overhead watering, address dryness/shade; spray with 'Pestoil' or 'Eco-Oil'.

Thrips: Tiny sucking insects; attack leaves and flowers causing browning of petals and/or leaves; commonly attack soft petals of paler-coloured flowers – Magnifying glass/ hand lens may be needed to see them; spray lightly with Pyrethrum.



Caterpillars: Chew large holes and pieces from leaves; produce frass, visible beneath plants - Pick off and squash; Pyrethrum contact spray or if in large numbers, apply *Bacillus thuringiensis* ('Dipel')

Weevils: Small non-flying brown insects with chewing mouthparts; attack a wide range of plant roots and leaves; cause a notched appearance to leaves; nocturnal feeders; hide during daylight beneath plants - Trap at night under cardboard or a piece of wood & destroy; Pyrethrum contact spray.

Fungal Diseases

Microscopic fungal spores are spread from plant to plant by wind & water in spring or autumn; germinating spores send a thread-like mycelium throughout plant cells, feeding on leaf or petal juices and causing yellowing or browning as spots or streaks; mini-mushroom-like fungal fruiting-bodies then sprout from leaves or petals and release spores to be spread by wind/water to other leaves, flowers or plants. In late summer a few spores encapsulate to over-winter in leaf litter beneath the plant. **'Clean Cultivation' is vital to prevent spread of spores from plant to plant. (i.e. Removal and destruction of all damaged plant material, including fallen flowers, leaves etc. from beneath plants and disinfection of pruning tools especially secateurs with alcohol between plants).** Apply a 'clean-up' fungicidal spray to affected plants during winter, e.g. 'Triforine', 'Mancozeb'

Sooty Mould: NOT a disease but the side-effect of sap-sucking insects - Spray blackened leaves with soapy water or soft-soap solution, locate and treat sap-sucking insects.

Botrytis (Grey Mould): Browning and rotting of flowers from the centre out; grey fungal fruiting bodies often visible with hand lens at base of flower; seasonal in autumn; favours cool, moist conditions; can affect cuttings - Clean Cultivation; spray with 'Triforine' or 'Mancozeb'.

Camellia Canker and Dieback (*Glomurella cingulata*): Grey patches and/or brown cankers on stems and dieback of twigs and branches; favours warm, humid conditions; readily attacks stressed plants; more common on *C. sasanqua*, *C. reticulata* & *C. hybrids* - Remove diseased stems well below area of infection; paint cuts with Bordeaux paste; disinfect tools between cuts; Clean Cultivation is vital; spray plant and soil beneath with 'Triforine' or 'Mancozeb'.

Leaf Gall (*Exobasidium camelliae*): Affects spring growth causing new leaves to become enlarged, thickened and fleshy and turn from green to white or pink; mainly affects *C. sasanqua* - Remove and burn affected leaves; Clean Cultivation is vital; spray with 'Triforine' or 'Mancozeb'.

Viruses

Most plant viruses are harmless and remain un-noticed. Viruses are spread from plant to plant via sap by sap-sucking insects, known as vectors and by tools such as secateurs.

Camellia Yellow Mottle Virus: Causes variegation of leaves and/or flowers by destroying colour (in blotches); favoured in selected cultivars for colour patterns on flowers; spread through cuttings and by grafting non-infected scions onto infected root-stocks; several strains of the virus are present in camellias; seedlings are virus-free - No chemical or cultural controls exist but *C. sasanqua* and *C. coleifera* rootstock should be taken from seedlings not cuttings, Clean Cultivation is vital.



Diseases caused by Environmental Factors

Leaf-drop: Some natural leaf-drop occurs in spring; can result from poor soil drainage or planting too deep.

Bud Balling: Due to over-production of flower buds &/or soil dryness – De-bud; maintain soil moisture during flower production.

Leaf browning from edges or tips: Caused by sun-scald, dryness or erratic water uptake.

Browning of petals of pale-flowered cultivars: Caused by early-morning sun hitting dewy petals – Position stronger coloured cultivars in sunnier aspects; provide paler varieties with protection from early sun.

Leaf yellowing: Some yellowing and loss of older leaves in spring is natural as plant re-directs nitrogen to new growth; yellow/green leaf patterns can be due to iron or manganese deficiencies caused by restriction of nutrient uptake if soil is not sufficiently acidic – Check pH and adjust if necessary by adding organic matter and/or sulphur; apply a trace element fertilizer.

Camellia Oedema/Leaf Gall: Lower sides of leaves develop brown, corky, roughened swellings; caused by roots taking up more moisture than leaves can transpire; more common in a cool, moist atmosphere when air temperature is lower than soil temperature; - Improve soil texture and fertility, especially nitrogen availability, avoid overwatering.

Root-rot and/or basal stem rot: Caused by too-deep planting or build-up of soil or mulch against stem – Maintain original soil level around base of plant; apply mulch sparingly from a few inches away from stem to dripline; re-apply mulch annually and disturb old mulch to ensure that roots have not grown into previous years’ mulch.



MONTHLY SCHEDULE 2019

July 2019	
July 13 th -14 th	NSWCRS 50th Annual Show Ravenswood School Hall, Henry Street, Gordon BENCHING ON SATURDAY FROM 7AM-11AM
July 20 th -21 st	Camellias Illawarra Annual Show (TIGS)
July 22 nd	NSWCRS Monthly Meeting (On the 5th Monday due to show) <i>Gordon Baptist Church, 20-22 Park Ave, Gordon</i> 6.45pm benching for bloom competition; 7.30pm meeting start Guest Speaker: Craig Carol on Camellias
August 2019	
Monday, 19 th	NSWCRS Monthly Meeting (Always 3rd Monday of Month) <i>Gordon Baptist Church, 20-22 Park Ave, Gordon</i> 6.45pm benching for bloom competition; 7.30pm meeting start. Guest speaker: TBA



JULY NSWCRS MONTHLY MEETING

MONDAY, 22ND JULY

GORDON BAPTIST CHURCH,

20-22 PARK AVE, GORDON

WITH

GUEST SPEAKER

Craig Carroll

ON

Camellias

BENCHING OF BLOOMS COMMENCES AT 7pm

GENERAL MEETING AT 7:30pm

GUEST SPEAKER AT 7:45pm

VISITORS WELCOME



MONTHLY BLOOM COMPETITION CLASSES 2019

Class	Description	Mar	Apr	May	Jun	Jul	Aug	Sep
1	Sasanqua Single	✓	✓	✓				
2	Sasanqua Formal Double & Elegans Form	✓	✓	✓				
3	Sasanqua other forms	✓	✓	✓				
4	Sasanqua any form				✓			
5	Japonica/Hybrid Single		✓	✓	✓	✓	✓	✓
6	Japonica/Hybrid Semi-double		✓	✓	✓	✓	✓	✓
6A	Japonica / Hybrid Irregular Semi-Double		✓	✓	✓	✓	✓	✓
7	Japonica/Hybrid Elegans Form		✓	✓	✓	✓	✓	✓
8	Japonica/Hybrid Informal Double		✓	✓	✓	✓	✓	✓
9	Japonica/Hybrid Formal Double		✓	✓	✓	✓	✓	✓
10	Japonica/Hybrid Miniature		✓	✓	✓	✓	✓	✓
11	Japonica/Hybrid any form	✓						
12	Reticulatas & their hybrids		✓	✓	✓			
13	Reticulatas & their hybrids up to 130mm					✓	✓	✓
14	Reticulatas & their hybrids over 130mm					✓	✓	✓
15	Other not listed	✓	✓	✓	✓	✓	✓	✓
16	Clusters & sprays of multi-flowered species & hybrids	✓	✓	✓	✓	✓	✓	✓
17	New seedling or sport (1 to 3 blooms)	✓	✓	✓	✓	✓	✓	✓
C1	Collection: Sasanqua, any form, 3 blooms	✓	✓					
C2	Collection: Any camellia, any form, 3 blooms		✓	✓	✓	✓	✓	✓

Classes

Classes 1 to 15: one bloom, with a maximum of 2 attached leaves

Classes C1 & C2: a collection of 3 blooms, with a maximum of 2 attached leaves

Competition

A 'Novice' exhibitor has not won the annual 'Novice' championship, nor have they scored 20 points in a monthly 'Open' competition. The competition year starts in March, and a 'Novice' in March remains so to the end of that year. A bloom exhibited by a 'Novice' can win in 'Open' classes.

Points

'Open' and 'Novice' Classes 1 to 16: 1st = 3 points; 2nd = 2 points; 3rd = 1 point (if required)

'Open' and 'Novice' Collections Classes C1 to C2: 1st = 6 points; 2nd = 4 points; 3rd = 1 point (if required)

'Open' and 'Novice' Champion bloom (from the winning blooms) Extra 3 points.



A VISIT TO KEVIN WALPOLE'S GARDEN- PHOTOS CAROLYN AND DANIEL LOW

What may have been a rather wet experience turned out to be a marvelous one in glorious sunshine. On arrival it was rather dismal but as our spirits improved and so did the weather.

Kevin was a wonderful host on the day, firstly, showing us all of the marvelous plants at the front of his house. What a phenomenal collection of Bromeliads he has. Species of all sizes and colours abound and just a glance in a different direction and another marvel comes to your attention.



Bromeliads



Orchids and Close-up



Hagoromo

From the front we then were led on a mysterious tour to the rear of the property. Past the feline acquaintances, onto one of a number of decks, alongside the pool and its entertaining areas to the expansive views of the adjacent parkland and the upper reaches of Bantry Bay.



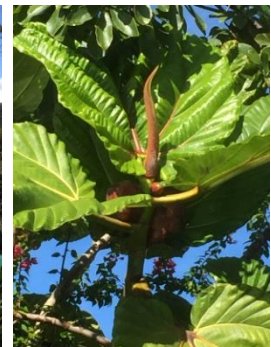
The Carp Pond



Kevin's Float Bowl



The North East View



New Guinea Fig



We were then taken upstairs past the indoor Carp pond to the top balcony where the outlook was fantastic. Finally, the fine French cuisine “Les Sandwichs” accompanied by hot or cold drinks were on offer. It was wonderful to meet up with our friends in a different setting and it was very generous of Kevin to host the day.



LADY GOWRIE- THE BLOOM- DANIEL AND CAROLYN LOW

While doing some historical camellia research I was pointed towards E.G. Waterhouse’s “Camellia Trail” and there was the story of ‘Lady Gowrie’.

As this variety is our Society Emblem I felt more members would like to know the history of the plant and without this rather rare book at hand it would not be available.

“*Lady Gowrie* : Large semi-double, upwards of five inches in diameter, about twenty petals and a narrow, dense cylinder of stamens. The tall petals are very deeply and beautifully notched at the apex, forming two lobes. Colour Fuchsine pink (6 27/2 to 6 27/1). This beautiful new camellia was raised from seed in the author’s garden from a plant of *Saluensis* imported from Marchant in England. It is a garden hybrid, the leaves are somewhat larger than *Saluensis*, and on some branches the foliage approximates to that of the japonica series.”

Artwork by Paul Jones



CORRECTION FOR MAY NEWSLETTER

Novice champion should have said Beth Bunyan for her bloom- Wilamina. Appologies to Beth.



NSWCRS COMMITTEE CONTACT DETAILS

Patron:	Her Excellency Professor The Honourable Dame Marie Bashir AD CVO Apt 3 / Level 8 THE ASTOR 123 Macquarie Street SYDNEY NSW 2000	
President:	Daniel Low 2 Narelle Avenue Pymble NSW 2073	H: 99883280 E: nswcamellias@hotmail.com
Vice President:	Rachel O'Connor PO Box 9 Killara NSW 2071	H:94982227 E: ooconor@tpg.com.au
Secretary:	Helen Wallace 41 Hewitt Street Wahroonga NSW 2076	M:0404 721 572 E: helen_wallace@optusnet.com.au
Treasurer:	Julie Hood 45/10 Murray Street Lane Cove North NSW 2066	H: 94118569 E: jhoodmazlin@gmail.com
Public Officer:	Richie Griffiths	
Newsletter Editor:	Erin Foulsham 8/539 Pacific Highway Killara NSW 2071	E: erinfoulsham@gmail.com
Librarian:	Bill Fleming 21 Fishburn Road Galston NSW 2159	E: wffleming@primusononline.com.au
Membership Sec.	Carolyn Low 2 Narelle Avenue Pymble NSW 2073	E: nswcamellias@hotmail.com
Committee:	Daniel Low (<i>President</i>)	Erin Foulsham (<i>Newsletter Editor</i>)
	Rachel O'Connor (<i>Vice President</i>)	Margaret Levick <i>Fellow</i>
	Helen Wallace (<i>Secretary</i>)	Wendy Sadler-Moyes (<i>Immediate Past President</i>)
	Julie Hood (<i>Treasurer</i>)	Juliet Muras
	Richie Griffiths (<i>Public Officer</i>)	Carolyn Low (<i>Membership Secretary</i>)
Judging Coordinator Ex-officio	Marion Moyes	E: mmoyes4@bigpond.com
National Councillors:	Daniel Low and Carolyn Low	
ABN:	16 873 158 367	
Incorporation No.:	Y17693-47	



Camellias Illawarra. 2019 Camellia Shows

The 67th Annual CAMELLIA SHOW



C. Japonica "Prince Frederick William"

 **TIGS**

The Illawarra Grammar School

Enter from Powell St, West Wollongong

Sat 20 July 2019

1.00pm – 5.00pm

Sun 21 July 2019

9.00am – 3.00pm



Admission: **Free**

The 21st Annual RETICULATA SHOW



C. Reticulata "Glorious Gift"

Bulli Uniting Church
Cnr Princes Hwy & Point St
Bulli

Sat 10 August 2019

11.00am – 3.00pm

Admission: **Free**



For information contact:
Mr William Walker 02 42842790
Email: walker38@optusnet.com.au
www.camelliasillawarra.org.au



MEMBERSHIP

Membership has reached 100 members this month with hopefully more to join at the annual show. Membership fees for 2019 were **due on 1st November 2018**. If you have not already done so, kindly make arrangements to renew your annual membership. The following table outlines membership fees:

Membership type	Emailed newsletter*	Black & white posted newsletter**
Single	\$30	\$60
Household	\$40	\$70
Life members	Free	\$30
*Included as part of all memberships		
**An additional fee of \$30 covers expenses of printing & postage		

Payments Methods: Via Internet Banking OR Via Direct Deposit over the counter at a Commonwealth Bank

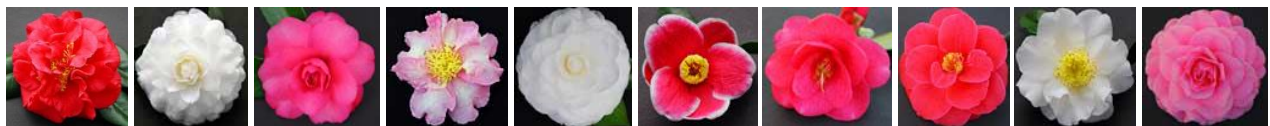
Account Name: NSWCRS

BSB: 062247 Account Number: 0090 0966

Put as a Reference: "RenewalYourSurname"



ESTABLISHED 1939



OUR NURSERY

8 Cattai Ridge Road

Glenorie NSW 2157

Australia

Phone: (02) 9652 1200

Fax: (02) 9652 2740

NURSERY TRADING HOURS

9am-4pm

OPEN 7 DAYS

Browse our website at:

<http://www.cameliagroove.com.au>





- Stroll through the beautiful camellia garden
- Tour the house, and absorb early twentieth century history, culture and architecture
- Take Sunday Afternoon Tea as served by Mrs Waterhouse. Bookings recommended

ENJOY ERYLDENE THROUGHOUT THE YEAR IN 2019



Eryldene is open from 10am to 4pm on:

April 13-14

Celebrate our 105th Birthday with FREE ENTRY
View parts of the Collection not usually on display

May 11-12

Mothers Day Weekend, celebratory teas served from
11.00am both days, bookings essential

June 8-9 and July 13-14

When most camellias are at their best

August 10-11 and September 14-15

For late camellias and azaleas

November 23-24

Eryldene Christmas Fair with over 50 unique stalls

Eryldene is also available for private booked tours,
venue hire for weddings, events, and photography

Book at www.ticketebo.com.au/eryldene



ERYLDENE HISTORIC HOUSE AND GARDEN

17 McIntosh Street, Gordon, NSW 2072
eryldene@eryldene.org.au 02 9498 2271
www.eryldene.org.au



Kahoonna

NEUTROG™

The Experts' Choice

Ideal for acid loving plants.





Sydney Cherry Blossom Festival and Garden Day

Saturday 17 August to Sunday 25 August 2019

Auburn Botanic Gardens

Garden Day with Stalls

Tuesday 20 August 2019 9AM - 5PM